

- Superior performance
- Increased safety
 - Pedestrian Crossing Alert by "Sound" & "Light"
- Excellent reliability

Product Description

DINEXTM STAR LED headlight system provides a state of art combination of intelligent illumination, increasing driver and pedestrian awareness, and maximum reliability in addition to our great warranty coverage.

Superior Performance

DINEXTM STAR LED headlight system provides additional advantages over both standard halogen and HID lighting. The solid-state intelligent LED lighting allows for less energy consumption, greatly extended operational life, resulting in reduced maintenance costs. In addition to being SAE/DOT FMVSS 108 compliance, the DINEXTM STAR LED headlight system produces an instantaneous field of cool white light. Solid-state design, excellent heat dissipation and lower power consumption are the key reasons for longer life and lower maintenance costs.

Increased Safety

Proper road illumination is a critical factor in allowing drivers to identify potential road hazards. The Sound Light Turning Alert System of the DINEXTM STAR LED headlight substantially improves driving under poor



Low Beam (90mm)

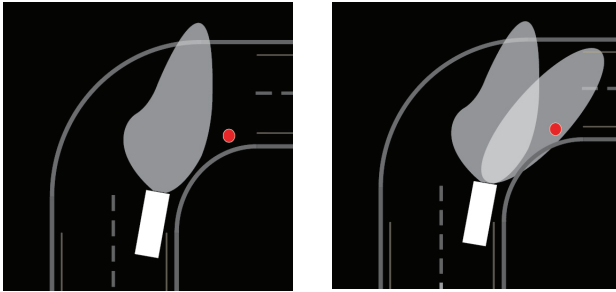
Features

- **High performance long life solid state LED**
 - emitted cool white color closer to daylight, enhance projection distance and maximize the visibility.
- **Sound-light Turning Alert Reinforced (STAR)*** - DINEXTM STAR LED headlight improves driving under poor lighting condition. Built-in super bright LED lights inside the LED headlight assembly enable the driver to better see objects and alert pedestrians crossing the road by sound and light.
- **Energy efficient** - DINEXTM STAR LED headlight uses nearly 40% less energy than conventional headlights, reduce battery drain, greatly extend battery life.
- **Replaceable lens**
- **SAE/DOT FMVSS 108 compliance**
 - AMECA report number: B100LA0016

Warranty

- **7 years limited warranty** (Does not cover misuse and abuse)

lighting conditions. An intelligent controller calculates the vehicle's speed, steering wheel angle and automatically turns on additional super bright LED lights inside the headlight in the direction of travel. The added light enables the driver to better see objects on the road directly ahead.

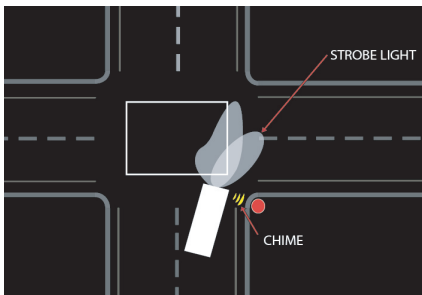


without STAR*

with STAR*

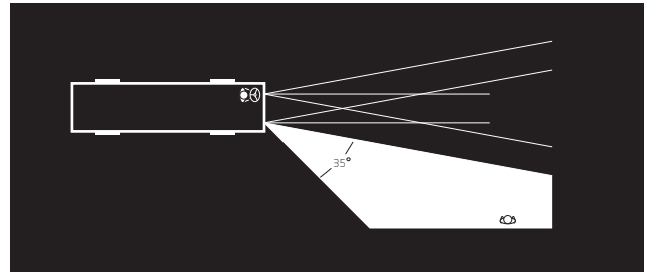
™

The DINEX™ STAR LED headlight is a smart LED headlight with built-in sound and light alert systems. When bus is turning, it provides alerts (sound and light) to pedestrians at road crossing and improves driver visibility under poor light conditions

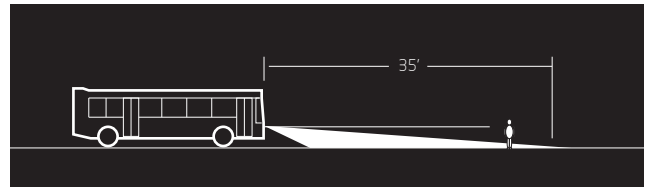


Pedestrian Crossing Alert System

The super bright LED will give the driver an additional 35 degrees of viewing angle up to a distance of 35 feet on the pavement without causing any glare to oncoming vehicles. The light points down by 5~ 20 degrees from the headlight position directly on the pedestrian crossing pavement.



Additional 35 degrees of viewing angle



The light points down by 5 ~ 20 degrees

Excellent Reliability

DINEX™ STAR LED headlights are long-lasting, maintenance free, highly efficient and cost-effective. Built with an aluminum die-cast housing to effectively dissipate the heat generated from the LED. DINEX™ STAR LED headlight system also uses hard coated polycarbonate lens, and high performance solid state LEDs, the DINEX™ STAR LED headlight withstands shock and vibration and never needs a replacement bulb. Moreover, the DINEX™ STAR LED headlight system has self diagnostic function. It detects LED failure and the warning can be displayed on the dash panel.

Specification

- **Operating temperature range:** -40 C ~ 85 C
- **Operating voltage range:** 16V ~ 32V
- **FMVSS 108 compliance**
- **Design to meet SAE J1455 Standard**